

Why I Love You

Verse 1 DAA Melody



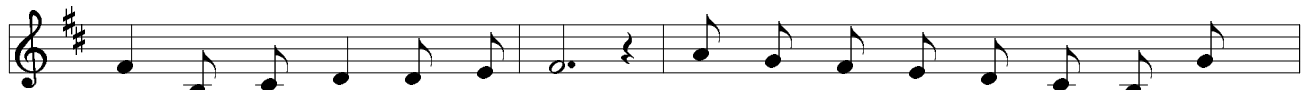
There's one who is far a - way Cru - el fate keeps us a -
M 5 0 1 2 3 4 5 7 6 5 4 1 6



part. Whom I love by night and day She's the i - dol of my
M 5 5 0 1 2 3 4 5 7 6+ 5 2 7 6+



heart. In my dreams I see her lov - ing face. That dear
M 5 7 6 5 4 3 2 1 6 5 3 4



face comes to me like a spell. Full of beau - ty and so full of
M 5 1 2 3 3 4 5 7 6 5 4 3 2 1 6



grace. The one I love so well.
M 5 8 7 5 4 5 3

Why I Love You

Refrain DAA Melody

Tell me why the stars do shine. Tell me why the

M 0 1 2 3 5 4 3 1 0 3 1 2 3 5 4

i - vy twines. Tell me why the sky's so blue

M 3 1 4 0 1 2 3 5 4 3 1 0

Then I will tell why I love you

M 7 6 5 4 6 5 4 3

Refrain DAA Harmony

Tell me why the stars do shine. Tell me why the

H 2 3 4 5 7 6 5 4 3 2 3 4 5 7 6

i - vy twines. Tell me why the sky's so blue

H 5 4 6 2 3 4 5 7 6 5 4 3

Then I will tell why I love you

H 9 8 7 6 8 7 6 5

Words by Fred Mower
 Music by Roy L. Burtch
 1899

Why I Love You

D G D A G



1.) There's one who is far a - way Cru - el fate keeps us a -
2.) Soon I'll be with her a - gain From her lips I steal a

D G D F#m A E



- part. Whom I love by night and day She's the i - dol of my
kiss No more part - ing no more pain Oh what rap - ture oh what

F#m D G D



heart. In my dreams I see her lov - ing face. That dear
bliss. Press - ing her un - to my own true heart Whis - per

Bm G D G



face comes to me like a spell. Full of beau - ty and so full of
to her - words of - cheer. That no more from her I'll have to

D G D A D



grace. The one I love so well.
part From her I love so dear.

Why I Love You

D G D

Tell me why the stars do shine. Tell me why the

E7 A7 D G D

i - vy climbs. Tell me why the sky's so blue

B7 Em D A7 D

Then I will tell why I love you

Words by Fred Mower
Music by Roy L. Burtch
1899